



Enrollment Progress

Date	Total Enrollment	Target Enrollment Increase	Net Increase	Actual Net Increase	Progress Toward Goal
<i>2009</i>	<i>300,545</i>	<i>30,000</i>	<i>30,472</i>	<i>30,472</i>	<i>101.57%</i>
<i>2010</i>	<i>342,956</i>	<i>80,000</i>	<i>42,411</i>	<i>72,883</i>	<i>91.10%</i>
11-Jan	348,106	80,000	5,150	78,033	97.54%
11-Feb	354,861	80,000	6,755	84,788	105.99%
11-Mar	355,940	80,000	1,079	85,867	107.33%
11-Apr	360,402	80,000	4,462	90,329	112.91%
11-May	361,184	80,000	782	91,111	113.89%
11-Jun	363,965	80,000	2,781	93,892	117.37%
11-Jul	366,505	80,000	2,540	96,432	120.54%
11-Aug	368,373	80,000	1,868	98,300	122.88%
11-Sep	371,501	80,000	3,128	101,428	126.79%
11-Oct	374,963	80,000	3,462	104,890	131.11%
11-Nov	376,314	80,000	1,351	106,241	132.80%
11-Dec	378,221	80,000	1,907	108,148	135.19%
12-Jan	379,038	80,000	817	108,965	136.21%
12-Feb	380,261	80,000	1,223	110,188	137.74%

Enrollment by County

County	Feb-12	Jan-12			Healthy Kids Baseline		
	Enrollment	Previous Month	Change	% Change	Baseline	Change	% Change
Baker	1,627	1,631	-4	-0.25%	1,186	441	37.18%
Benton	4,435	4,427	8	0.18%	3,212	1,223	38.08%
Clackamas	26,194	26,101	93	0.36%	17,179	9,015	52.48%
Clatsop	3,477	3,429	48	1.40%	2,376	1,101	46.34%
Columbia	4,280	4,263	17	0.40%	2,983	1,297	43.48%
Coos	6,561	6,535	26	0.40%	5,029	1,532	30.46%
Crook	2,263	2,252	11	0.49%	1,589	674	42.42%
Curry	1,718	1,715	3	0.17%	1,171	547	46.71%
Deschutes	16,072	16,039	33	0.21%	9,677	6,395	66.08%
Douglas	11,487	11,457	30	0.26%	8,441	3,046	36.09%
Gilliam	115	121	-6	-4.96%	76	39	51.32%
Grant	583	581	2	0.34%	439	144	32.80%
Harney	717	721	-4	-0.55%	509	208	40.86%
Hood River	2,877	2,858	19	0.66%	2,175	702	32.28%
Jackson	23,232	23,125	107	0.46%	15,403	7,829	50.83%
Jefferson	3,385	3,386	-1	-0.03%	2,632	753	28.61%
Josephine	9,909	9,911	-2	-0.02%	7,280	2,629	36.11%
Klamath	7,862	7,859	3	0.04%	5,769	2,093	36.28%
Lake	680	691	-11	-1.59%	549	131	23.86%
Lane	32,224	32,072	152	0.47%	23,373	8,851	37.87%
Lincoln	4,724	4,705	19	0.40%	3,462	1,262	36.45%
Linn	13,940	13,921	19	0.14%	9,723	4,217	43.37%
Malheur	4,774	4,777	-3	-0.06%	3,640	1,134	31.15%
Marion	45,872	45,693	179	0.39%	34,177	11,695	34.22%
Morrow	1,575	1,563	12	0.77%	1,125	450	40.00%
Multnomah	69,374	69,131	243	0.35%	51,890	17,484	33.69%
Polk	7,449	7,407	42	0.57%	5,389	2,060	38.23%
Sherman	153	149	4	2.68%	131	22	16.79%
Tillamook	2,246	2,241	5	0.22%	1,690	556	32.90%
Umatilla	9,799	9,796	3	0.03%	7,115	2,684	37.72%
Union	2,664	2,697	-33	-1.22%	1,953	711	36.41%
Wallowa	542	560	-18	-3.21%	379	163	43.01%
Wasco	2,948	2,938	10	0.34%	2,093	855	40.85%
Washington	43,428	43,205	223	0.52%	28,473	14,955	52.52%
Wheeler	124	127	-3	-2.36%	78	46	58.97%
Yamhill	10,513	10,507	6	0.06%	7,435	3,078	41.40%
Unknown	438	447	-9	-2.01%	272	166	61.03%
Statewide	380,261	379,038	1,223	0.32%	270,073	110,188	40.80%

Data Sources (unless otherwise noted):

The Department of Human Services, Division of Medical Assistance Programs (DMAP). Numbers of clients under age 19 on the Oregon Health Plan. Data extracted from the DMAP DSSURS database. Counts reported are for a single day census of clients on the Oregon Health Plan.

The Office of Private Health Partnerships (OPHP). Numbers of clients under age 19 enrolled in the Family Health Insurance Assistance Program (FHIAP) and the Healthy KidsConnect Program. FHIAP enrollment captured from the last snapshot of the month, indicating a count of clients whose enrollment status is active on the day of the count. Healthy KidsConnect counts include clients actively enrolled plus enrollees with effective plan dates of the first the following one to two months.



Enrollment by Program

Program	Feb-12 Current Month	Jan-12			Feb-11			Healthy Kids Baseline Jun-09		
		Previous Month	Change	% Change	Previous Year	Change	% Change	Baseline	Change	% Change
Oregon Health Plan	371,497	370,561	936	0.25%	348,660	22,837	6.55%	267,843	103,654	38.70%
<i>Medicaid (Title XIX)</i>	301,356	300,092	1,264	0.42%	284,340	17,016	5.98%	221,095	80,261	36.30%
<i>CHIP (Title XXI)</i>	70,141	70,469	-328	-0.47%	64,320	5,821	9.05%	46,748	23,393	50.04%
<i>Medicare (Title XVIII)</i>	0	0	0	0.00%	-	0	-	-	0	-
Healthy KidsConnect	6,780	6,492	288	4.44%	4,081	2,699	66.14%	-	6,780	-
<i>Private Market Option</i>	6,771	6,484	287	4.43%	4,077	2,694	66.08%	-	6,771	-
<i>ESI</i>	9	8	1	12.50%	4	5	125.00%	-	9	-
FHIAP	1,984	1,985	-1	-0.05%	2,120	-136	-6.42%	2,230	-246	-11.03%
TOTAL	380,261	379,038	1,223	0.32%	354,861	25,400	7.16%	270,073	110,188	40.80%



Enrollment by Income Level (FPL)

FPL	Feb-12	Jan-12			Feb-11			Healthy Kids Baseline		
	Current Month	Previous Month	Change	% Change	Previous Year	Change	% Change	Baseline	Change	% Change
< 201%	373,481	372,546	935	0.25%	350,780	22,701	6.47%	270,073	103,408	38.29%
201 - 250%	4,694	4,474	220	4.92%	2,995	1,699	56.73%	-	4,694	-
251 - 300%	2,010	1,942	68	3.50%	1,046	964	92.16%	-	2,010	-
> 300%	76	76	0	0.00%	40	36	90.00%	-	76	-
TOTAL	380,261	379,038	1,223	0.32%	354,861	25,400	7.16%	270,073	110,188	40.80%



Enrollment by Program (detail)

Programs	Healthy Kids Baseline									
	Feb-12	Jan-12			Feb-11			Jun-09		
	Current Month	Previous Month	Change	% Change	Previous Year	Change	% Change	Baseline	Change	% Change
Oregon Health Plan	371,497	370,561	936	0.25%	348,660	22,837	6.55%	267,843	103,654	38.70%
<i>PLM</i>	148,482	147,587	895	0.61%	140,214	8,268	5.90%	104,340	44,142	42.31%
<i>TANF</i>	117,654	117,332	322	0.27%	108,739	8,915	8.20%	82,692	34,962	42.28%
<i>CHIP</i>	70,099	70,434	-335	-0.48%	64,265	5,834	9.08%	46,710	23,389	50.07%
<i>ABAD</i>	10,490	10,503	-13	-0.12%	10,125	365	3.60%	9,045	1,445	15.98%
<i>Foster Care</i>	18,169	18,076	93	0.51%	18,234	-65	-0.36%	17,911	258	1.44%
<i>CAWEM</i>	6,600	6,629	-29	-0.44%	7,081	-481	-6.79%	7,145	-545	-7.63%
<i>Standard*</i>	3	0	3	-	2	1	-	0	3	-
Healthy KidsConnect	6,780	6,492	288	4.44%	4,081	2,699	66.14%	-	6,780	-
<i>Private Market Option</i>	6,771	6,484	287	4.43%	4,077	2,694	66.08%	-	6,771	-
<i>ESI</i>	9	8	1	12.50%	4	5	125.00%	-	9	-
FHIAP	1,984	1,985	-1	-0.05%	2,120	-136	-6.42%	2,230	-246	-11.03%
TOTAL	380,261	379,038	1,223	0.32%	354,861	25,400	7.16%	270,073	110,188	40.80%



Enrollment by Race/Ethnicity

Race/Ethnicity	% of Total OR Race/Ethnicity*	Feb-12		Jan-12			Feb-11			Healthy Kids Baseline Jun-09		
		Current	Percent	Previous Month	Change	% Change	Previous Year	Change	% Change	Baseline	Change	% Change
Black/African American	2.44%	14,402	3.79%	14,323	79	0.55%	14,005	397	2.83%	12,365	2,037	16.47%
American Indian/Alaska Native	1.29%	6,454	1.70%	6,462	-8	-0.12%	6,336	118	1.86%	5,433	1,021	18.79%
Asian/Native Hawaiian/OPI	4.16%	11,249	2.96%	11,172	77	0.69%	10,224	1,025	10.03%	6,723	4,526	67.32%
White	68.36%	202,633	53.29%	201,912	721	0.36%	187,386	15,247	8.14%	142,557	60,076	42.14%
Hispanic, Latino	19.51%	111,651	29.36%	111,290	361	0.32%	105,339	6,312	5.99%	83,652	27,999	33.47%
Other, unknown ¹	4.24%	33,872	8.91%	33,879	-7	-0.02%	31,571	2,301	7.29%	19,345	14,527	75.09%

*Rates for Oregonians age 18 and younger from an Office for Oregon Health Policy and Research analysis of 2010 Census Data; 2010 Census Redistricting Data Summary file, table QT-PL: Race, Hispanic or Latino, Age, and Housing Occupancy



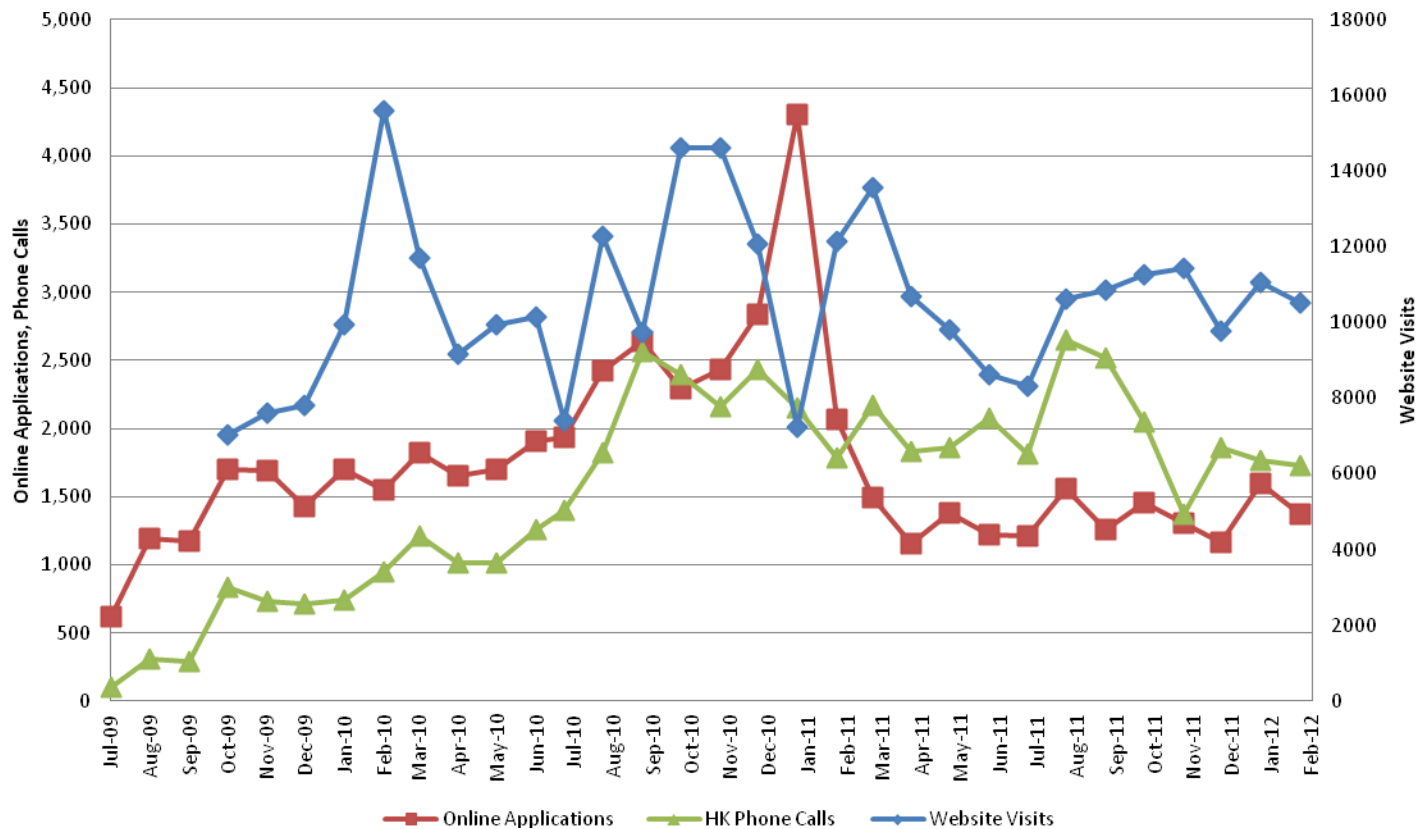
Enrollment by Gender

Gender	Healthy Kids Baseline									
	Feb-12	Jan-12			Feb-11			Jun-09		
	Current	Previous Month	Change	% Change	Previous Year	Change	% Change	Baseline	Change	% Change
Female	185,672	185,058	614	0.33%	173,550	12,122	6.98%	132,740	52,932	39.88%
Male	194,589	193,980	609	0.31%	181,311	13,278	7.32%	137,333	57,256	41.69%
TOTAL	380,261	379,038	1,223	0.32%	354,861	25,400	7.16%	270,073	110,188	40.80%

Enrollment by Age

Age	Healthy Kids Baseline									
	Feb-12	Jan-12			Feb-11			Jun-09		
	Current	Previous Month	Change	% Change	Previous Year	Change	% Change	Baseline	Change	% Change
Less than 1	25,181	25,102	79	0.31%	24,831	350	1.41%	23,710	1,471	6.20%
1 to 5	118,208	118,066	142	0.12%	112,632	5,576	4.95%	87,173	31,035	35.60%
6 to 12	137,858	137,402	456	0.33%	127,484	10,374	8.14%	93,923	43,935	46.78%
13 to 18	99,014	98,468	546	0.55%	89,914	9,100	10.12%	65,267	33,747	51.71%
TOTAL	380,261	379,038	1,223	0.32%	354,861	25,400	7.16%	270,073	110,188	40.80%

HK Website and Phone Trends: July 2009 – February 2012¹²³⁴



¹ Sources: Oregon Health Plan Processing Center (Branch 5503). Healthy Kids Phone Calls and Applications report. Office of Private Health Partnerships (OPHP). Weekly phone call report. Google Analytics Report for Healthy Kids Website. Visits for All Visitors (Monthly).

² The Jan-11 website visit data point incomplete due to the transition to a new HK website.

³ Phone call data points for Oct 2011 through Jan 2012 revised February 2012. Reports from these months incorrectly coded all OPHHP calls into the statistic.

⁴ The Oct-11 phone call data point includes two weeks of HKC call data only due to data retrieval issues



HK Website and Phone Trends: February 2012¹

HK Website	Feb-12
Website Visits	10,513
Online Applications	1,367
HK Phone Calls	Feb-12
HK Phone Line	1,124
<i>English</i>	<i>1,022</i>
<i>Spanish</i>	<i>99</i>
<i>Russian</i>	<i>3</i>
OPHP - HK Calls*	600
Total Phone Calls	1,724

Online Applications Received – The number of OHP 7210W forms (PDF) submitted on the web.

Healthy Kids Phone Calls – the number of phone calls received on Healthy Kids phone line (1-877-314-5678), and Healthy Kids calls received at the Office of Private Health Partnerships (OPHP)

* OPHP HK phone call statistic revised February 2012. Data from Oct 2011 through Jan 2012 incorrectly coded all OPHP calls into the statistic.